



1 All the tools you would need: spirit level, drill, angle grinder (or jigsaw), tape measure, pencil, screwdriver, small paint brush and silicon gun.



2 Measure the height and width of the wall and calculate the number of panels required. Remember different patterns are different sizes.



3 Having selected a starting point, (the most level line between the ceiling or the floor), mark and cut the board to have a straight edge.



4 Place the panel against the wall and drill straight through the board and into the wall. We suggest five fixings per panel. One in the centre and one in each corner.



5 Insert plug (with a flared neck) and screw through hole into wall and tighten up. Be careful not to tighten the screw right through the board, but enough to countersink the screw-head.



6 Repeat this with all panels, trying to get the tightest fits between the panel joints. Interlocking 'teeth' can be shaped for better fit.



7 When all the panels are fixed, apply acrylic silicon to the screw-heads and joints and wipe off excess with a moist cloth.



8 Touch up with acrylic paint where required. Clean up the small amount of mess and you are done!

www.rockwood.net.au



FEATURE WALLS DECORATIVE PANELS

ROCKWOOD CLADDING

is an effective way of providing a realistic stone, slate or brick feature wall, easily and quickly at a reasonable price and with no wet trades or mess.



- Cost savings in labour
- Good thermal qualities
- Quick installation system
- Excellent acoustic qualities
- Easy and simple installation
- Does not require maintenance
- UV resistant
- All weatherproof
- Excellent water-repellent
- For indoor and outdoor use
- Excellent flame retardant properties
- Elegant combinations of materials & designs

T (08) 9284 0809

STUART SHACKELL

M 0414 503 953

RON JAMIESON

M 0450 512 224

E info@rockwood.net.au



See our stand at Home Base Expo 55 Salvado Road, Subiaco

TOOLS REQUIRED

Drill ~Screwdriver ~ Pencil ~ Saw ~ (hand-saw, jigsaw or small angle grinder with cutting disk) ~ Tape measure ~ Spirit level
Silicon gun and small paint brush

WE SUPPLY

The selected panels ~ Acrylic silicon
- Touch up paint



EVERGLADES SAND STONE

1100mm x 800mm



RUSTICA MIX STONE

1100mm x 780mm



CANTABRIA GREEN STONE

790mm x 780mm



TRAVERTINE LIGHT STONE

910mm x 860mm



NOTTINGHAM MIX STONE

1140mm x 780mm



KRUGER BROWN BRICK

960mm x 760mm



CLIFTON RED BRICK

950mm x 780mm



OLD TRAVERTINE SLATE

1100mm x 780mm



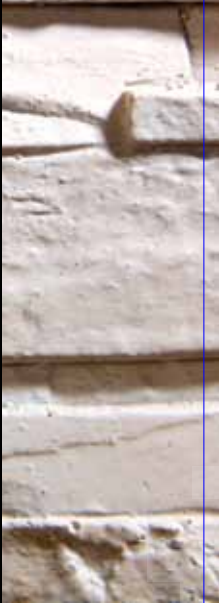
NEW TRAVERTINE SLATE

1000mm x 780mm



RIVEN WHITE SLATE

1100mm x 760mm



EASY INSTALLATION

